

STEEL HINGE

Steel Single Action Fire Rated Hinge

Suitable for use Fire Doors tested within a timber doorset to BS EN 1634-1 2000

single action		fire rated
---------------	--	------------

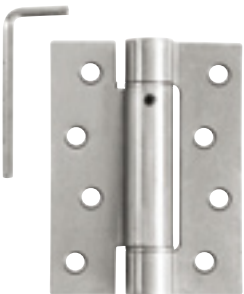
Technical Data	0105
Load Capacity (3 Hinges)	40.0 kg
Height	101.0 mm
Width	76.0 mm
Knuckle Diameter	18.0 mm
Leaf Thickness	2.5 mm
Screw Size	10.0 g

Finishes

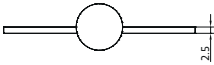
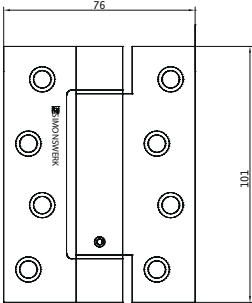
Satin Chrome, Polished Chrome

Note

- Adjustable spring tension
- Intumescent pads not necessary
- Square corner only
- 10 year guarantee does not apply to spring hinges
- Complete with fixing screws



0105



0105

