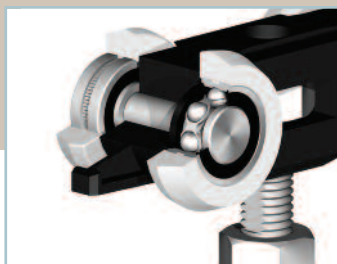


Herkules 120

Sliding door system for single doors



Herkules 120

USE: Internal sliding door kit, for domestic or light/medium commercial room dividers. For doors of wood or MDF.



Herkules 120 is a heavy duty sliding door system for use with single doors up to 120kg. It can be used for sliding doors between rooms or for entrances and with rollers mounted on ball bearings you are guaranteed an extremely smooth and quiet sliding door.

- Aluminium pre-drilled track for a durable, long lasting finish and easy installation
- Track can be ceiling or wall mounted (with optional wall brackets)
- Hangers feature rollers mounted on ball bearings for extra smooth and quiet running
- Anti-jump system means wheels will always run smooth
- Clear polycarbonate bottom guide - virtually invisible when installed
- Increased flexibility with a range of options, including wall brackets, pelmets and spacers (see Herkules Options)
- Additional door kit available without track



Herkules 120 For one sliding door

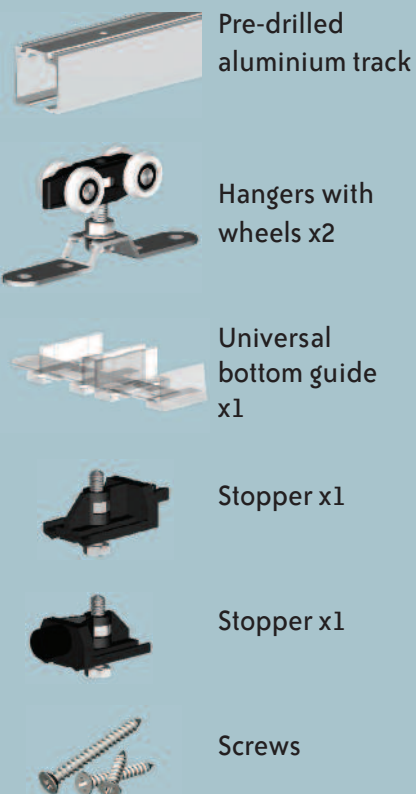
Range:

Note: Track is twice the length of the door opening.

- **SD/HS1212** for 600mm wide doors. Track length 1200mm
- **SD/HS1215** for 750mm wide doors. Track length 1500mm
- **SD/HS1218** for 900mm wide doors. Track length 1800mm
- **SD/HS1220** for 1000mm wide doors. Track length 2000mm
- **SD/HS1224** for 1200mm wide doors. Track length 2400mm
- **SD/HS1230** for 1500mm wide doors. Track length 3000mm
- **SD/HS120GR** Door Gear Kit for one extra door (no track)

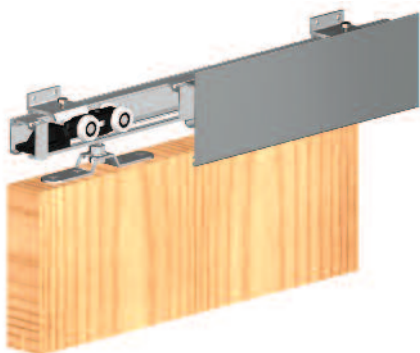
Max. Door weight 120kg
Min. Door thickness 22mm

Kit contains



Herkules options

A wide range of options is available to complement the Herkules range of sliding door systems.



Wall Brackets

Use when fixing Herkules track to a wall.

Wall brackets have been designed specifically for use with the Herkules track and simply slide into the grooves on the track and screw directly to the pre-drilled holes. Plates are available as an option (pack of 5) for Herkules 60 and 120 systems, and are included with Herkules Glass.

- SD/WBKT Herkules Wall Brackets (Pack of 5) plus fixings



Aluminium Pelmets

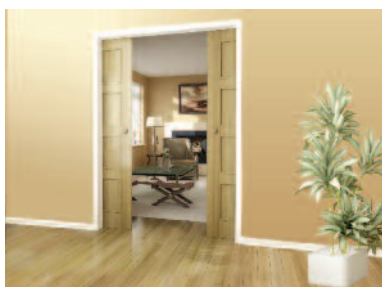
For a highly decorative finish, a range of anodised aluminium pelmets are available in silver, light brown, or gold finishes. Use in conjunction with wall brackets to hide the running track and gear, or use front and back when track is fixed to a soffit or ceiling (spacers required). The pelmets simply 'click' over the track, so there is no need for any additional drilling or fixing.

- SD/H2M20S Herkules Pelmet 2000mm Silver
- SD/H2M20B Herkules Pelmet 2000mm Light Brown
- SD/H2M20G Herkules Pelmet 2000mm Gold

Spacers

Use when installing pelmets with soffit or ceiling mounted track. The spacers allow space above the track for pelmets to fit.

- SD/SPACE Herkules Ceiling Spacers (Pack of 5)



Door Brushes

Self adhesive door brushes can be used with Herkules and Ares systems. Small brush size can be used to provide an additional soft closing element when added to the end of a door, preventing doors from slamming against walls or each other, whilst the large brush size can be used to prevent dust entering wardrobes.

- SD/BP4 Grey self adhesive brush, small size 11m
- SD/BP12 Grey self adhesive brush, large size 5.5m



Symetric

The Symetric kit is easy to fit and includes all the additional components needed to enable simultaneous opening and closing of two sliding doors. It can be used in conjunction with Herkules 60 and 120 (note: maximum individual door weight is 60kg).

- SD/SYMET Herkules Symetric Kit